

T&C Asia

Global Solutions for Power and Controls



*Motors, Gearmotors, Pumps, Blowers,
Power Supplies, Power Cords, Wiring Harnesses,
Value Added Assemblies, Contract Manufacturing & Offshore Sourcing*

www.tandcasia.com

T & C Asia

T & C Asia has been providing its customers with high quality electromechanical devices since 1987. Backed by over 25 years of experience, we have serviced various industries from motors used in medical exercise equipment to vending machines. Our strong engineering background allows us to aid our customers with design and selection of products minimizing the development time.

T & C Asia's dependable global supply has been critical to the profitability and long-term growth of many US Manufacturers. T & C Asia is not a trading company - we are not a middleman. We put you directly in contact with the manufacturer leaving no room for error.

With resources in China actively looking for unique USA made products, T & C Asia can manage importing and marketing your product in China successfully with its affiliate Trading Company in Ningbo located across from one of China's most affluent cities, Shanghai.

There are numerous providers around, but few can offer the product knowledge, customer service and attention to detail that T & C Asia delivers.

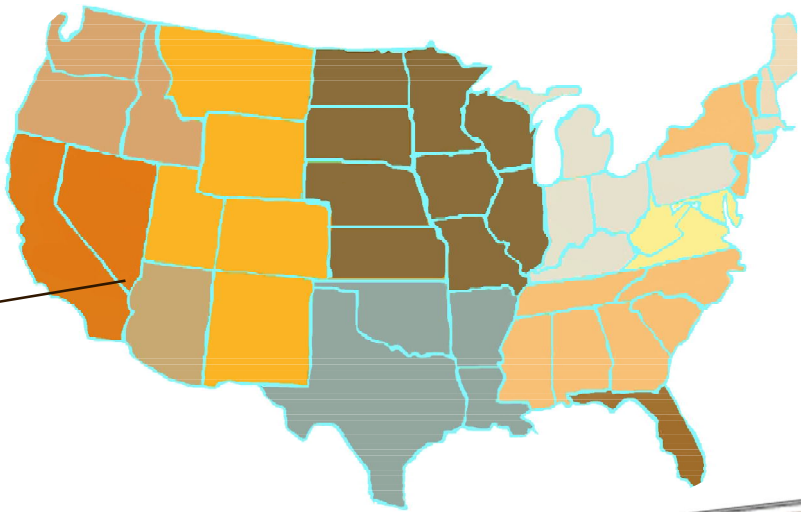
- Fractional and Sub-fractional Horsepower Motors and Gearmotors
- Brushless DC Motors and Controls
- Fans, Blowers and other Air Moving Devices
- Pumps, Compressors and Pressurized Tanks
- Power Supplies, Power Cords and Wiring Harnesses
- Value Added Assemblies and Contract Manufacturing
- Solar Technology including Solar DC Brushless Water Pumps

Nationwide Service

T & C Asia
4850 Byzantine Court
Las Vegas, Nevada 89149

tel: (661) 702-8565
fax: (360) 234-8510

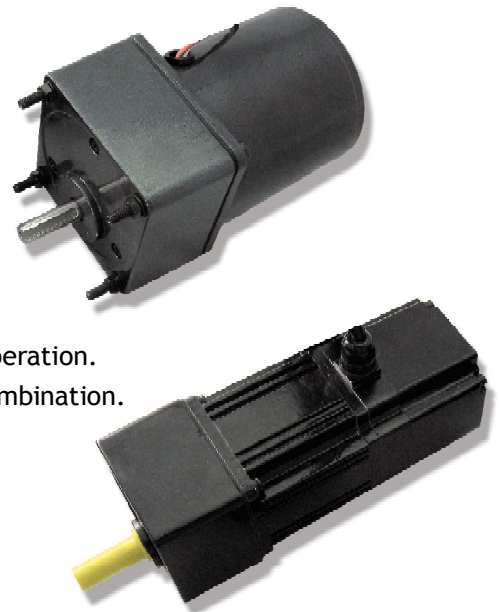
email: sales@tandcasia.com
website: www.tandcasia.com



Motors & Gearmotors

Induction Motors & Gearmotors

- Precision cast aluminum alloy housings with all ball bearing construction.
- Gear case sizes between 60mm and 90mm.
- Wide range of gear reduction from 3:1 to 200:1.
- Modular design: Mix and match motors and geared cases.
- Special output shaft configurations available.
- Gear cases rated up to 300 kg-cm operating torque and 40kg of overhung load.
- Modern manufacturing plants and quality driven processes assure extremely quiet operation.
- Decimal index case allows for additional 10:1 ratio added to any gear case/motor combination.
- Output power ratings from 6 to 200 watts.
- Single or three phase with standard voltages of 115V 50/60Hz and 230V 50/60Hz.
- Impedance and thermally protected.
- Agency approvals: UL, CSA, CE mark, RoHS.
- Customer requested modifications welcome.
- State of the art design: Cast aluminum alloy housings, high grade ball bearings, balanced rotors and precision machined shafts.
- Assorted models: Reversible motors, electromagnetic brakes, terminal boxes, speed controllers and electronic brakes.



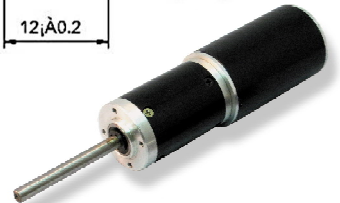
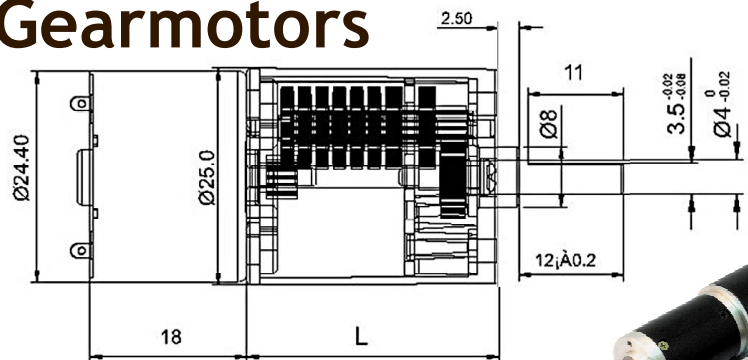
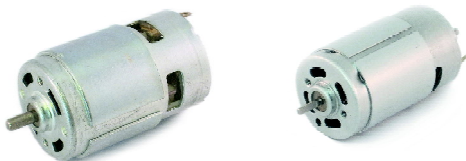
PMDC Motors & Gearmotors

- Micro-motors from 12 to 48mm diameter with flat, round and square type housings.
- Standard PMDC motor sizes from 60 to 90 mm diameter with cast aluminum housings.
- Special shaft configurations, lead assemblies and other value added options available.
- Factory stock of a wide range of micro - DC motors and gearmotors.
- Precision hobbled spur/pinion and planetary gear housings.



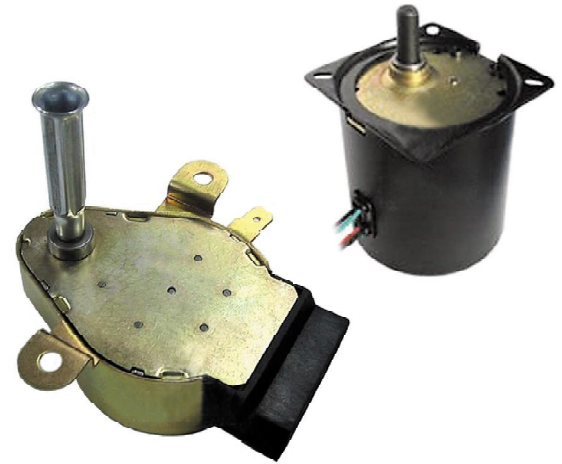
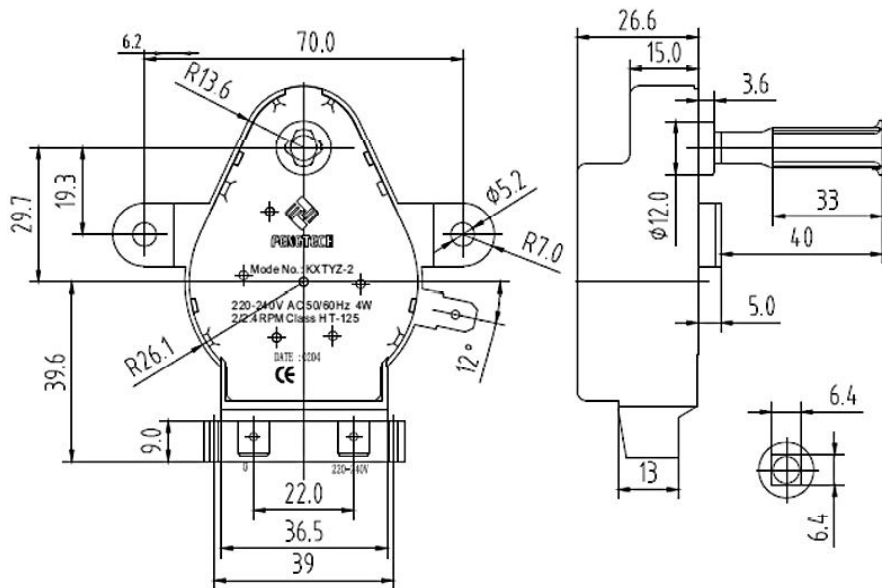
Planetary Gearmotors

Micro PMDC Motors



T&C Asia

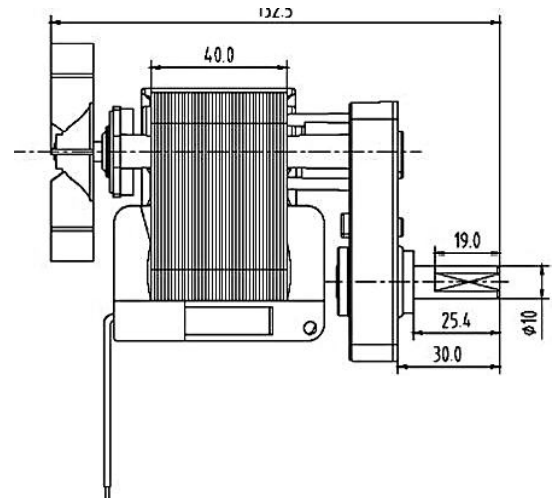
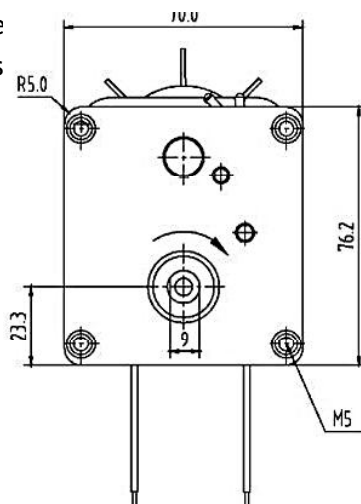
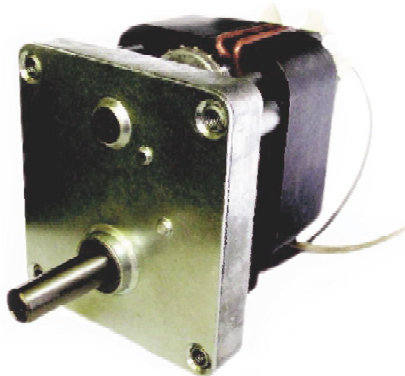
AC Synchronous & Hysteresis Gearmotors



| GEAR RATIO | | 1/51 | 1/70 | 1/92 | 1/133 |
|--|--------|------|------|------|-------|
| Rated Speed at 50Hz (RPM) | | 55 | 40 | 30 | 21 |
| Rated Torque at different Stator Length (kgf.cm) | L=16mm | 4.5 | 6 | 8.2 | 11.2 |
| | L=20mm | 5.6 | 7.5 | 10.2 | 14.3 |
| | L=25mm | 8.4 | 11.5 | 15.1 | 21 |
| | L=30mm | 11.2 | 15 | 10.3 | 28.5 |
| | L=40mm | 17.3 | 23 | 31 | 44 |

Shaded Pole Gearmotors

- Die-cast aluminum alloy gear case housings and covers.
- Spur/pinion and helical gearing machined on state of the art CNC hobbing machines.
- Precision design and through process controls produce quiet and durable gearmotors.
- Electromagnetic and friction brakes available
- Special shaft configurations, lead assemblies and other value added options offered.
- Agency approvals: UL, CSA, CE mark, RoHS.

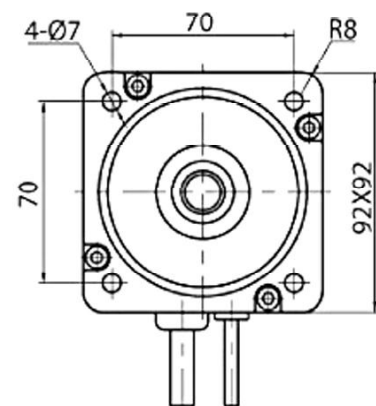
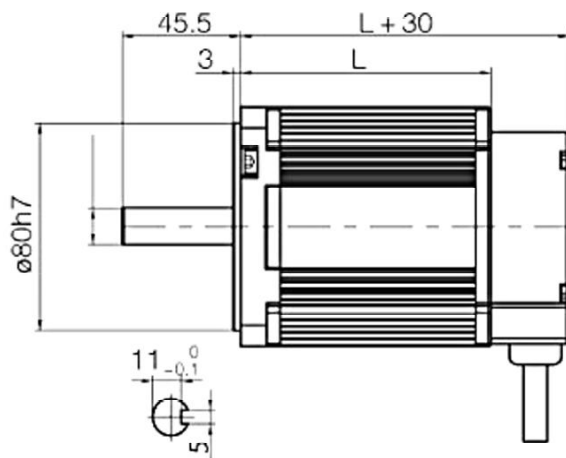
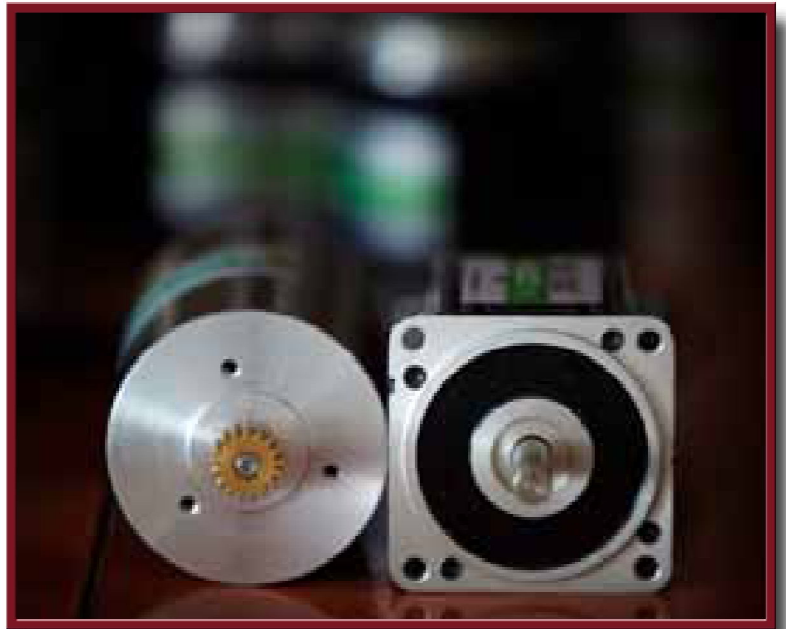


BLDC Motors

Make your switch to high efficiency,
long life, BLDC Motors and Gear Motors.

Available output power from 5 watts to
1,500 watts with and without controllers.

- Motor diameters from 28mm to 145mm •
- Input voltages from 12V DC to 350V DC •
- Power from 5 watt to 1,500 watt •
- Speed range from 100rpm to 20,000rpm •
- Sensor and sensorless designs •
- Internal and external motor controls •



| TYPE | UNIT | H92176NS1380-310FG44 | H92176NS446-180FG14 | H92130NS210-24FG27 | H92114NS150-24FG25 |
|---------------|------|----------------------|---------------------|--------------------|--------------------|
| Length mm | mm | 176 | 176 | 130 | 114 |
| Voltage | V | 220VAC(310VDC) | 180 | 24 | 24 |
| Phase | P | 8P (3 Phase) | 8P (3 Phase) | 8P (3 Phase) | 8P (3 Phase) |
| No Load Speed | RPM | 5450 | 1680 | 3370 | 3000 |
| Rated Power | W | 1380 | 466 | 210 | 150 |
| Rated Speed | RPM | 4400 | 1400 | 2700 | 2500 |
| Rated Current | A | 9.8 (AC) | 4.8 | 12 | 7.8 |
| Rated Torque | N.m | 3.0 | 3.18 | 0.74 | 0.57 |

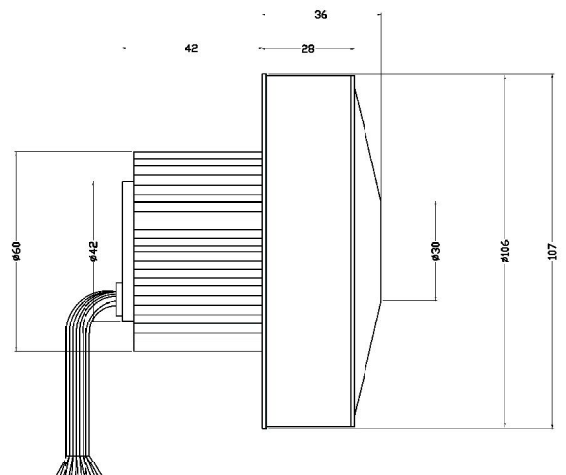
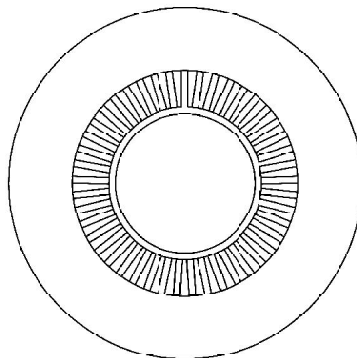
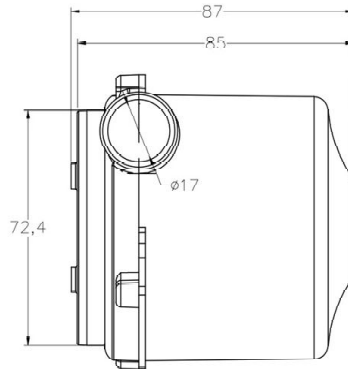
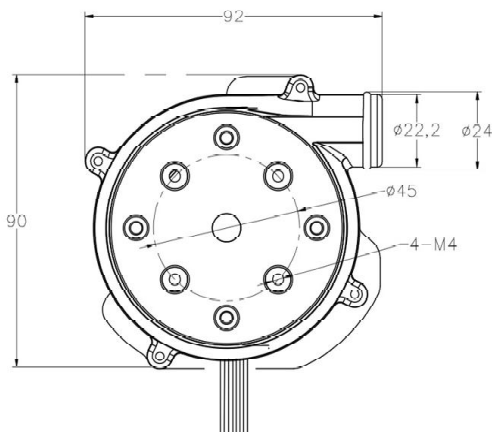
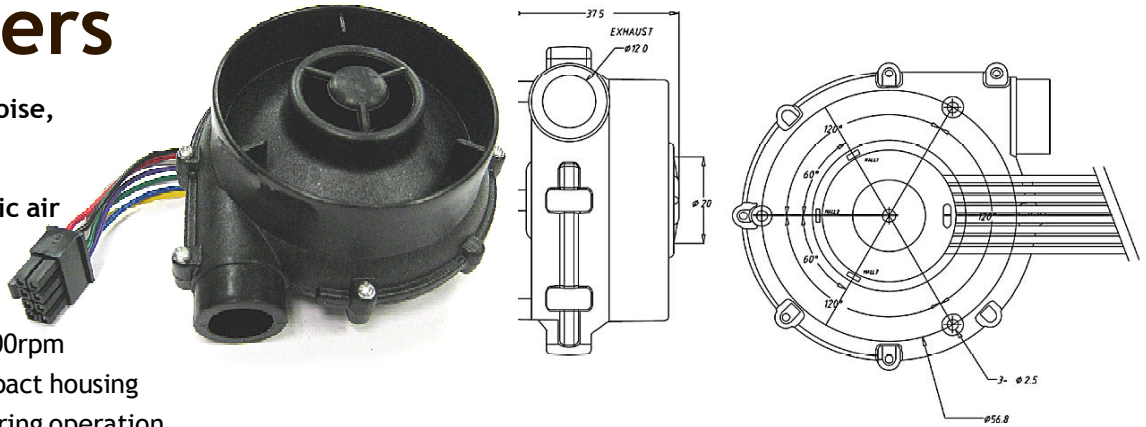
T&C Asia

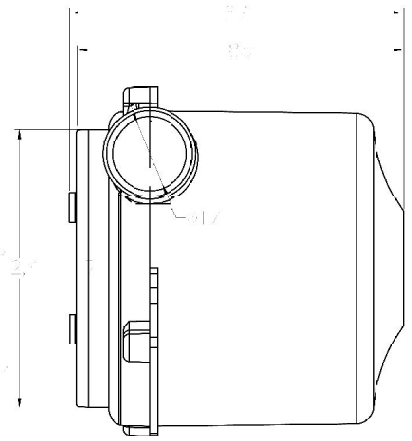
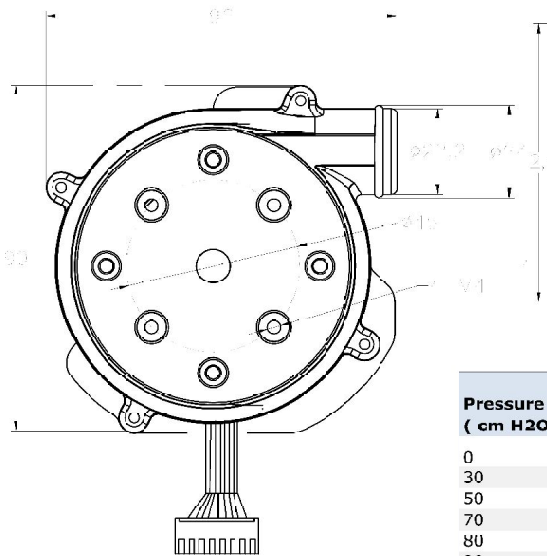
BLDC Blowers

Compact, high efficiency, low noise, powerfull BLDC Blowers.

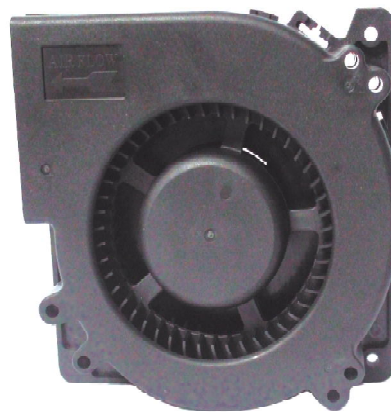
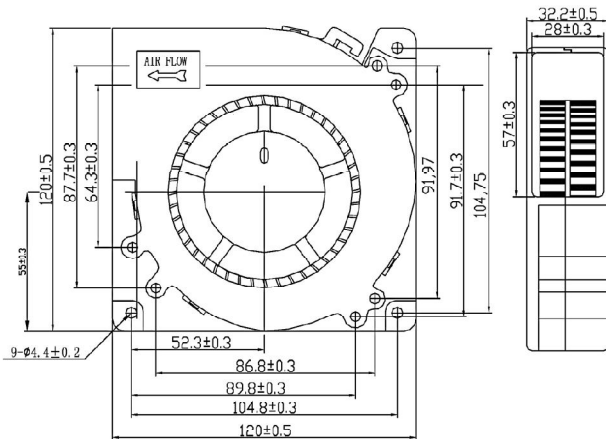
Air flow up to 280LPM with static air pressure up to 70cm H₂O.

- Long life NSK ball bearings
- High static air pressure at 35,000rpm
- Centrifugal construction in compact housing
- Intake air used to cool motor during operation
- High efficiency, low vibration and low audible noise
- Simple to connect





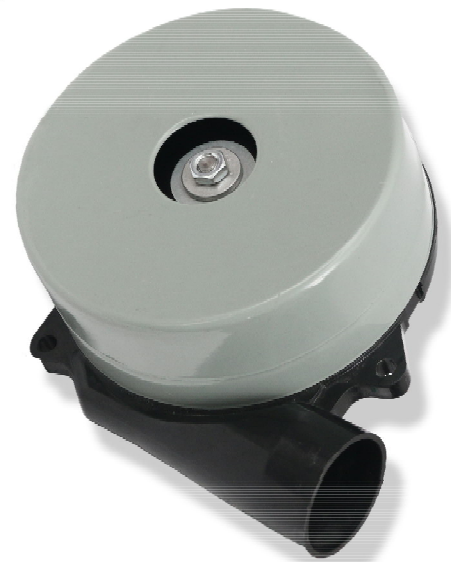
| Pressure (cm H ₂ O) | FLOW (L/min)68 XSV | Impeller Speed | Current(A) |
|-----------------------------------|--------------------------|-------------------|------------|
| 0 | 907 | 2360C | 7.6 |
| 30 | 735 | 2400C | 7.4 |
| 50 | 653 | 2420C | 7.1 |
| 70 | 498 | 2477C | 6.8 |
| 80 | 395 | 2499C | 6.4 |
| 90 | 285 | 2530C | 6.2 |
| 100 | 245 | 2550C | 5.3 |
| 110 | 90 | 2599C | 4.6 |
| 115 | 0 | 2543C | 3.8 |



Bearing Type
Ball Bearings
Material
Red Wire Positive(+)
Black Wire Negative(-)
Impeller & Frame:
plastic (UL94V-0)

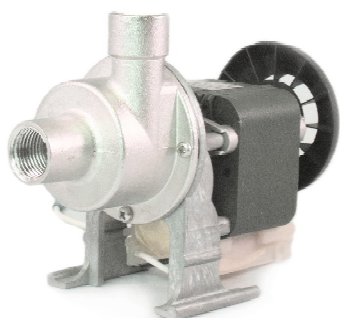
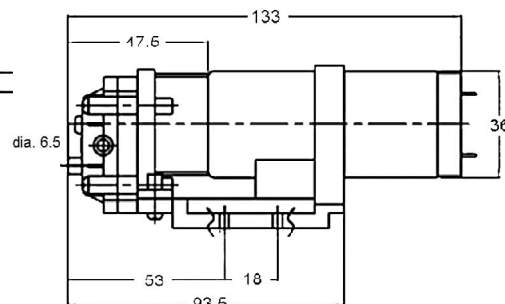
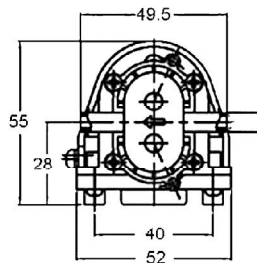


Function type is optional
Noise is measured in anechoic chamber in free air, one meter from intake side. Max. air pressure is measured at zero air flow.
All readings are typical values at rated voltage. Specifications are subject to change without notice.
The max. air flow and the speed are measured in free air.

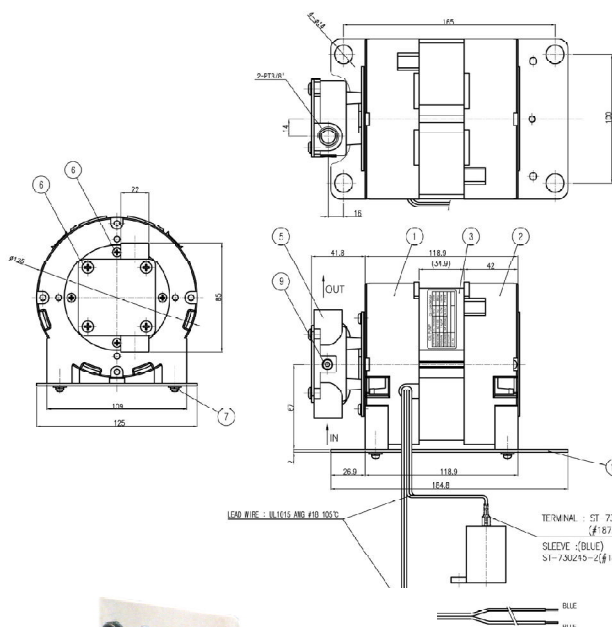


Pumps

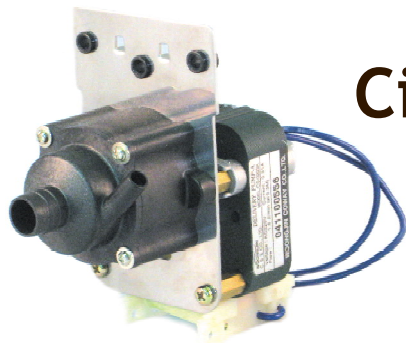
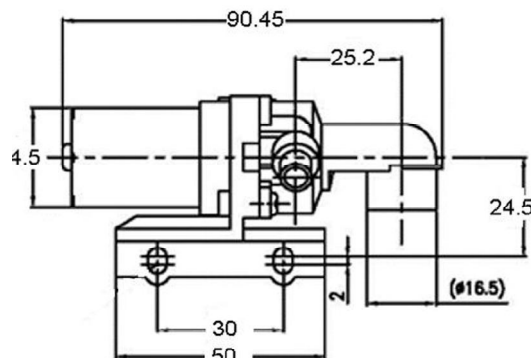
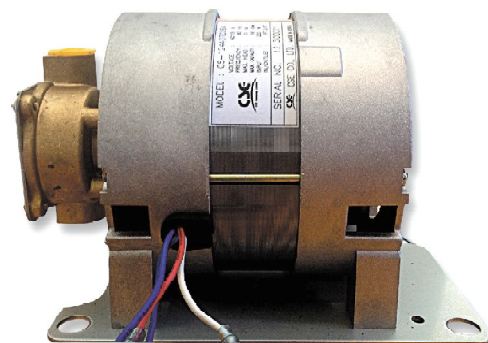
- Voltage: 24V DC
- Max Pressure: 28PSI
- Max Capacity: 40GPH



- Voltage from 100V 50/60HZ to 220V AC.
- Input power from 26 watts to 69 watts.
- Mac pressure from 3.3 Ft to 12.5 Ft.
- Max capacity from 32GPH to 222GPH.
- Liquid temperature from 32° to 213°F
- Applications: Circulating Water Pumps, Water Purifiers and Delivery Systems.



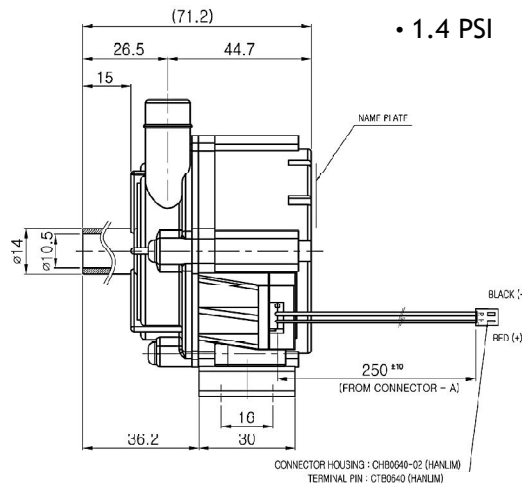
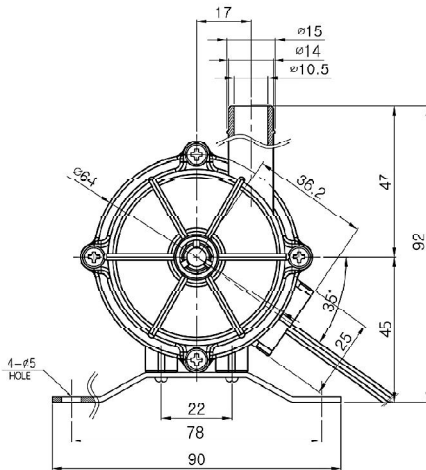
- Rated voltage: AC 115V 60Hz
- Lead wire: UL 1015, 18AWG
- Max pressure: 14 PSI
- Flow: 4 GPM



Circulation Pumps

Magnetic Drive Pumps

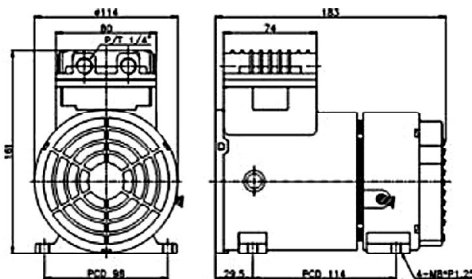
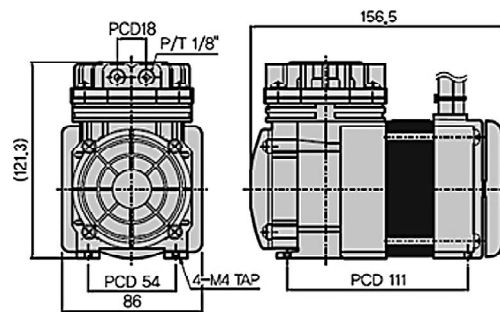
- Using voltage: DC12V [DC3.5~18V]
- Test voltage: DC 12V
- Flow: 10 l/min [at current: 0.7A]
- Head: 1.5 M
- 4.5 Feet Head
- 2.6 GPM
- 1.4 PSI



Oil-Less Air Compressors & Vacuum Pumps

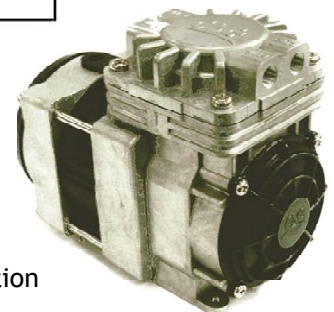
Diaphragm Type

- Oil-less, lube free
- Durable, Long life
- Minimal audible noise & vibration
- Thermally protected



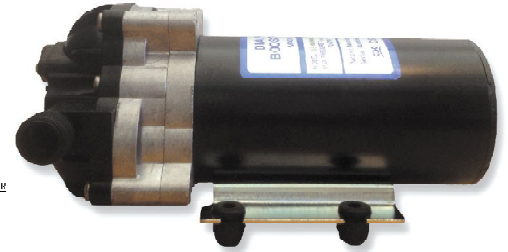
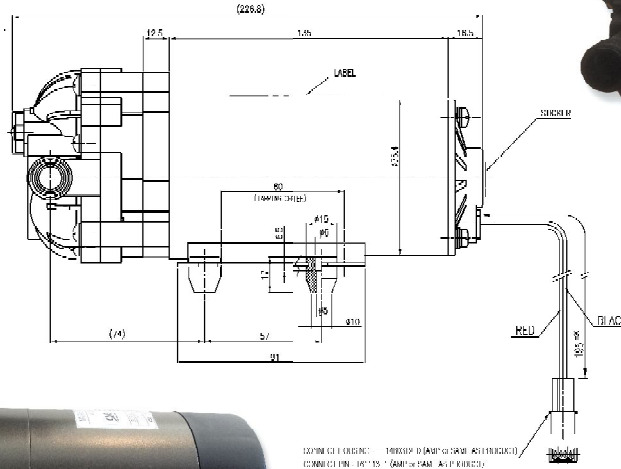
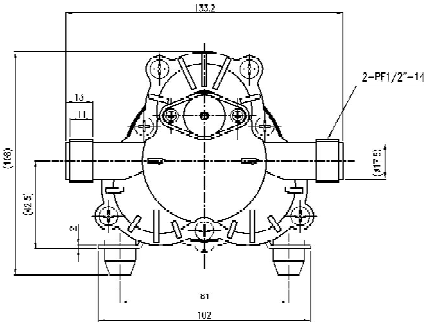
Piston Type

- Oil-less, lube free
- Durable, Long life
- Minimal audible noise & vibration
- Thermally protected



T&C Asia

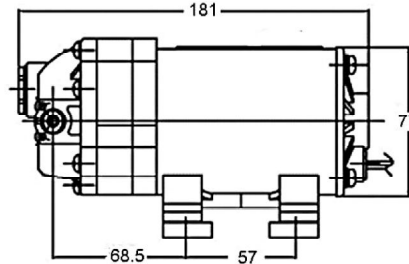
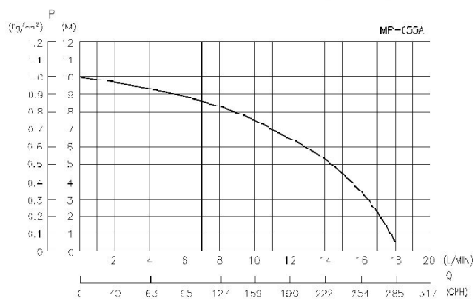
Diaphragm Booster Pumps



- Power supply: DC 24V
- By-pass setting pressure: 130psi
- AMPS: 1.5 [at OPEN]
- Max pressure: 130psi
- Flow: 2.6 GPM

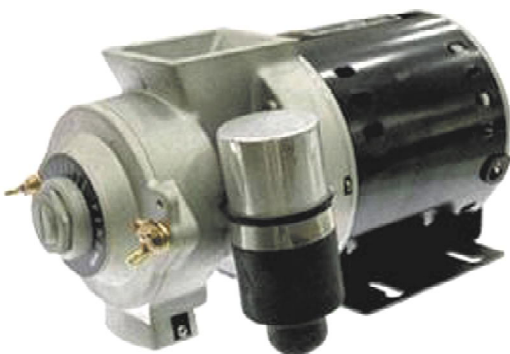
PERFORMANCE CURVE

ROOM TEMP : 24°C WATER TEMP : 14°C
POWER SUPPLY : AC220V 60Hz

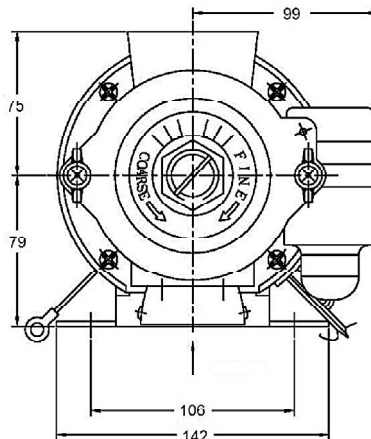


- Voltage: 24V DC
- Current: 75A
- Max Pressure: 100PSI
- Max Capacity: 14GPH

Coffee Grinder for OEM'S



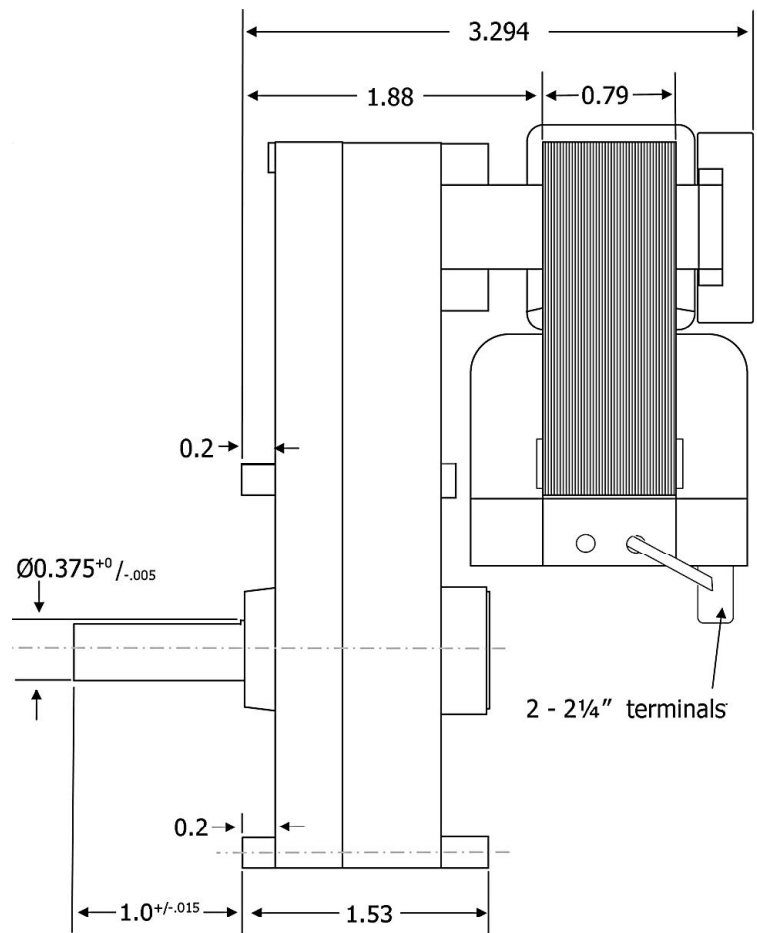
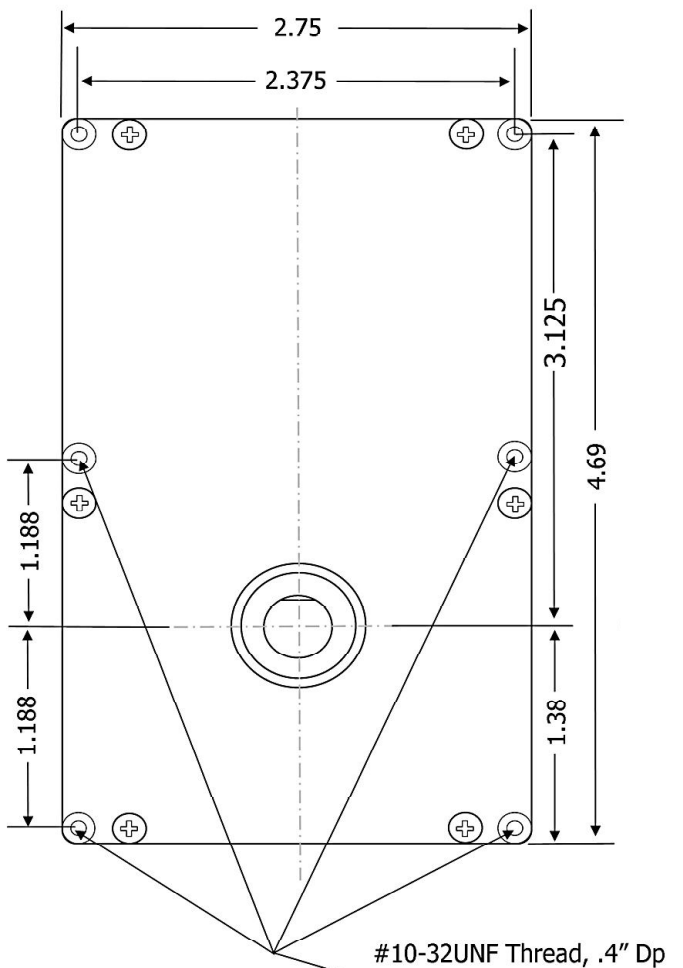
- Volt / Freq: 120V or 220V, 50/60Hz
- Motor: PSC AC Induction Motor
- Input Power: 1/2 Horsepower
- Housing: Die-cast Aluminum Alloy Housing
- Burr Set: Crushing or Slicing Burrs
- Life: 40,000 Lbs.



| DISCHARGE CAPACITY TEST DATA | | |
|------------------------------|----------|----------|
| BURR SET TYPE | CAPACITY | |
| | FINE | COARSE |
| Standard Crushing | 14g/5sec | 20g/5sec |
| High Flow Crushing | 42g/5sec | 50g/5sec |
| Precision Slicing | 78g/5sec | 83g/5sec |

Pellet Stove Auger Drive Specifications

- Aluminum alloy gear cases with (4) #10-32unc tapped mounting holes.
- Standard no load speeds of 1.1, 1.3, 1.5, 2.0 and 4.1rpm.
- Break-down torque or 220 inch-lbs. on lower speed models.
- 3/8" diameter, 1" long output shaft with machined flat.
- 115V 60Hz and Class B impedance protected motors.
- Lubricants designed for high temperatures and continuous duty.
- Options include integral wire leads, positive stop brakes and custom output shafts.
- Agency approvals: UL, CSA, CE mark, RoHS.



T&C Asia

Pumps & Compressors



Swimming Pool Pumps



Garden Pumps



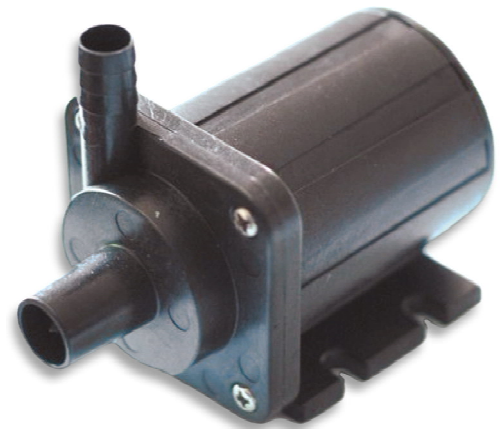
Fountain Pumps



Submersible Pumps

Solar DC Brushless Water Pumps

100 L/H up to 3,600 L/H. Long life, low voltage completely submersible and in line use.
Available for high temp applications up to 100° C for use in cooling and circulation systems.



Features

- 10 Year life span silent-working.
- Maintenance free.
- Small size with high efficiency and low consumption.
- 100% water proof.
- Adjustable flow rate.
- Submersible and external installation.
- Three-phase DC pump:
 - Can work continuously in water up to 100° C.
 - Adjusts water height and flow rate by PWM.
 - Rotor-lock and reverse connection protection.
 - Automatic overload protection.
 - Soft start with very low in-rush current.

Applications

- Swimming pools
- Solar fountain
- Body massage bathtubs
- Car cooling systems

Specifications

- Voltage: 4.5V-24V DC (Standard 12V DC)
- Max flow: 100 L/H to 3600 L/H or 16 Gallon/Min
- Max head: 1.9M to 13M
- Max working pressure: 2 Bar up to 8 Bar
- Max temp: up to 100° C

T&C Asia

**Custom Engineered Products
to Fit your Requirements**



**Value added assemblies and contract manufacturing from circuit boards
to motors to plastics. Let us use our extensive resources
to take your product from concept to shelf.**



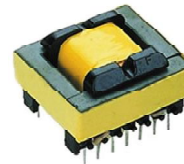
*Let us be your
"One Stop Shop"*

www.tandcasia.com

T&C Asia

Standard Products & Custom Assemblies

Lamps
Sockets
Power Cords
Wiring Harnesses
Variable Power Adapters



Transformers
Battery Chargers
Linear Power Supplies
Switching Power Supplies
Industrial Power Supplies

Offshore Sourcing

Capabilities for an array of products.
What ever you need, we can provide!



Spring and Bearings

Wide array of bearings in various sizes and classifications. Custom springs made to your specific requirements.



Aluminum Cans

Large production of containers with various specifications such as medical aluminium pots, pesticide aluminium bottles, simple extinguisher aluminium pots, and drinking aluminium bottles. All produced according to customers' specific requirements.



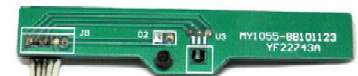
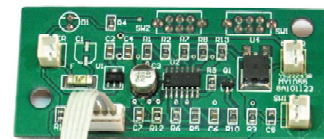
Machine Parts

We can provide anything your design calls for from arbors, springs and bearings to the most complicated sub assemblies and complete turnkey systems.



Plastic Parts

We can design up your tooling from the most basic drawing and render the part in various materials.



PC Boards

From start to finish, we can help you through engineering to final production boards. We can create from the simplest analog board to micro processor based boards.

www.tandcasia.com

T&C Asia

Global Solutions for Power and Controls



Your local representative:

Thomas Franck

4850 Byzantine Court
Las Vegas, NV 89149 U.S.A.
email: sales@tandcasia.com

tel: (661) 702-8565 fax: (360) 234-8510



www.tandcasia.com

